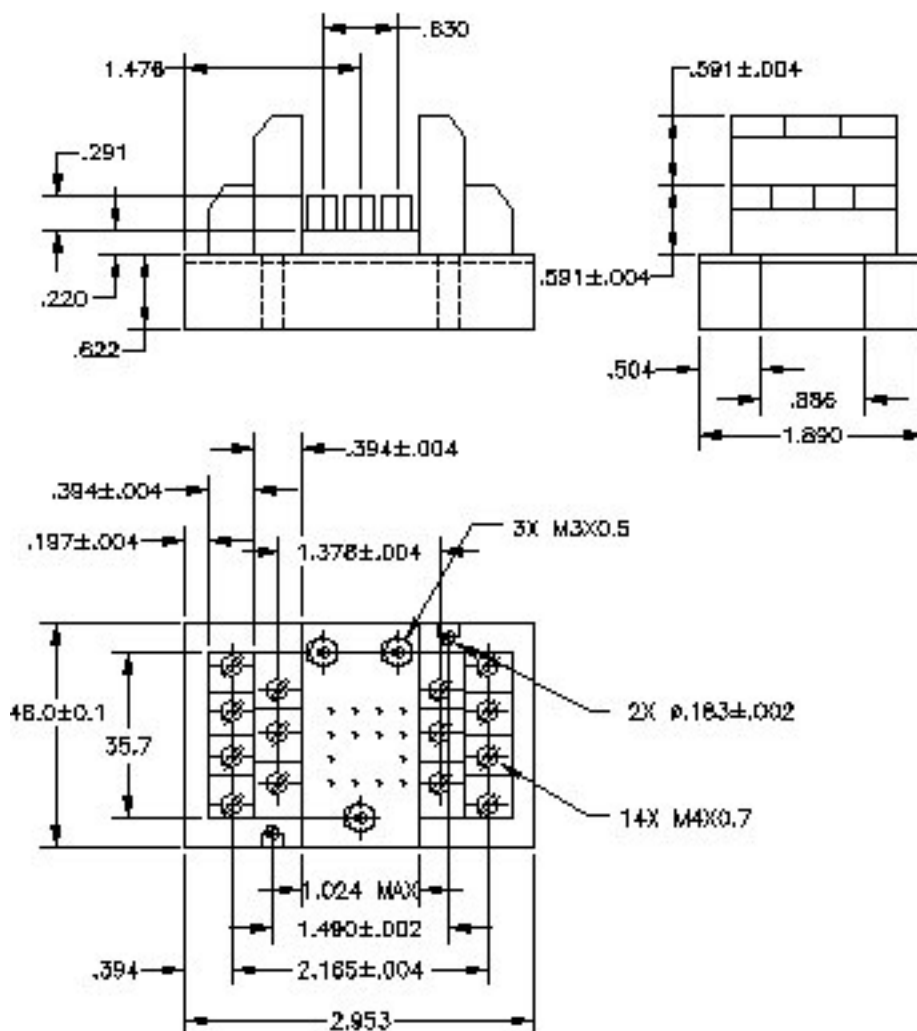


BASIC SOCKET SERIES DESIGNATION FOR:

**SERIES F470**

SOCKET DRAWING



**GENERAL CHARACTERISTICS**

Operating temperature	-25°C to +85°C
Storage temperature	-40°C to +100°C
Insulation resistance	> 1000 MΩ
Current ratings	12 A
Dielectric strength	1500 Vrms
Sinusoidal vibration	20 g / 10 to 2000 Hz
Shock	50 g / 11 ms
PCB	Epoxy resin and glass fiber (CEI 249-2, #5)
Housing	UL94V-0 Polyamide 6.6
Wire Terminals	Ni-plated copper alloy
Contacts	Nickle/gold plated copper-zinc-lead alloy
Mounting Studs	Stainless steel
Flammability	Rating: UL94 V-0
Grommet Insert	Stainless steel



Featuring **LEACH**® power and control solutions  
www.esterline.com

**AMERICAS**  
6900 Orangethorpe Ave.  
P.O. Box 5032  
Buena Park, CA 90622

Tel: (01) 714-736-7599  
Fax: (01) 714-670-1145

**EUROPE**  
2 Rue Goethe  
57430 Sarralbe  
France

Tel: (33) 3 87 97 31 01  
Fax: (33) 3 87 97 96 86

**ASIA**  
Units 602-603 6/F Lakeside 1  
No.8 Science Park West Avenue  
Phase Two, Hong Kong Science Park  
Pak Shek Kok, Tai Po, N.T.  
Hong Kong

Tel: (852) 2 191 3830  
Fax: (852) 2 389 5803

Data sheets are for initial product selection and comparison. Contact Esterline Power Systems prior to choosing a component.

