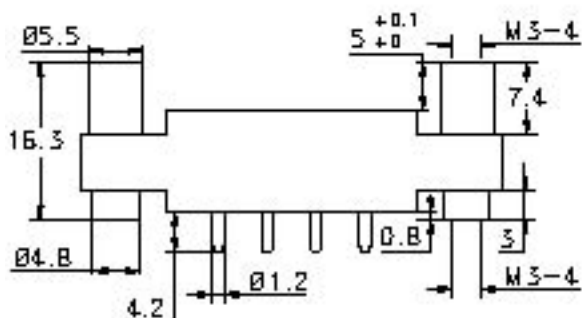


BASIC SOCKET SERIES DESIGNATION FOR:

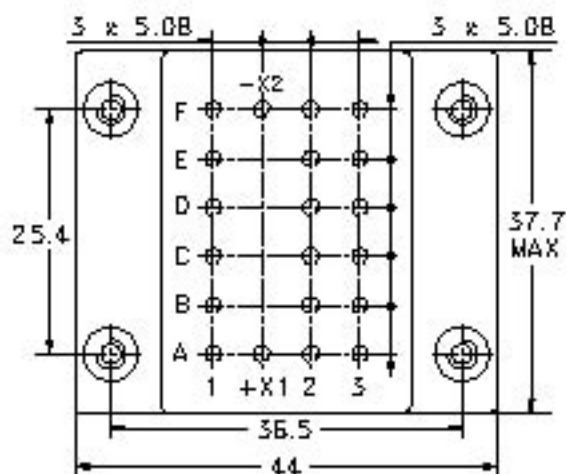
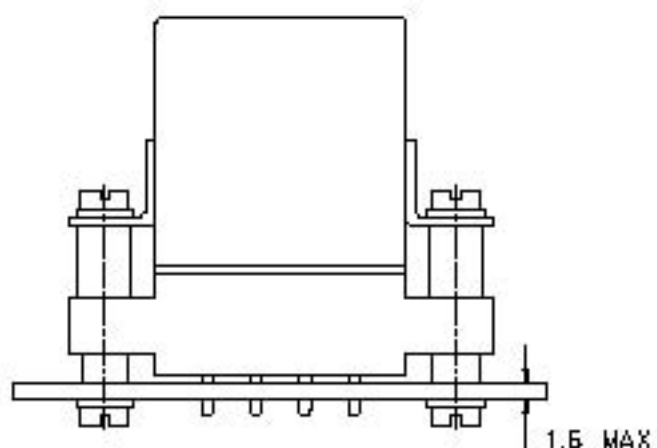
SERIES F600, F670

Socket for printed circuit board mounting

DIMENSIONS



MOUNTING



GENERAL CHARACTERISTICS

Temperature range	-55°C to +125°C
Storage Temperature	-70°C to +150°C
Insulation Resistance	> 1000 MΩ
Dielectric strength	
- Pins to mounting hardware	1500 Vrms / 50 Hz
- Between pins	1500 Vrms / 50 Hz
Sinusoidal vibration	20 g / 10 to 2000 Hz
Shock	50 g / 11 ms
Mounting hardware provided	8 screw M3-5



North America
6900 Orangethorpe Ave.
P.O. Box 5032
Buena Park, CA 90622 USA

Europe, SA
2 Rue Goethe
57430 Sarralbe
France

Asia-Pacific Ltd.
20/F Shing Hing Commercial Bldg.
21-27 Wing Kut Street
Central, Hong Kong

Leach International
www.leachintl.com

Tel: (01) 714-736-7599
Fax: (01) 714-670-1145

Tel: (33) 3 87 97 98 97
Fax: (33) 3 87 97 84 04

Tel: (852) 2 191 2886
Fax: (852) 2 389 5803