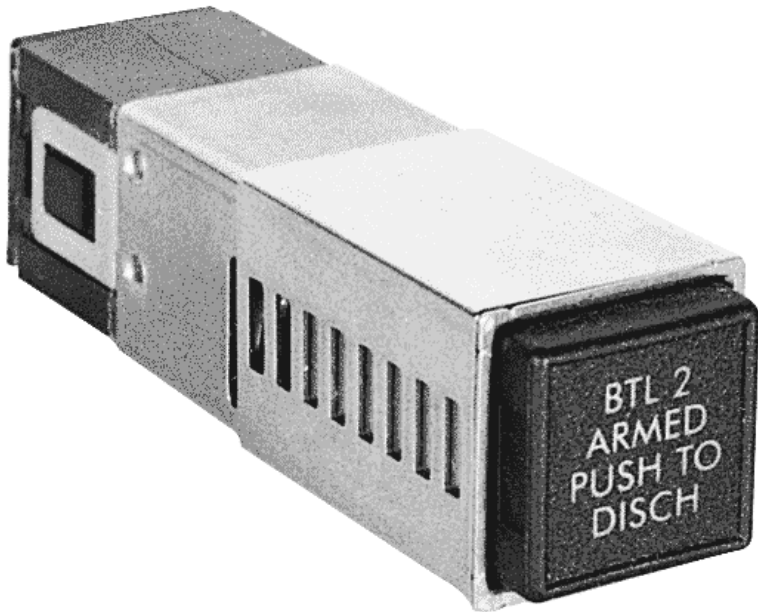


## ENGINEERING DATA SHEET

# SERIES L402

MOMENTARY ACTION  
PUSHBUTTON SWITCH/  
DISPLAY INDICATOR



- 3 possible versions

Single indicator

Momentary action pushbutton (1 stable position)

Alternate action pushbutton (2 stable positions)

- 4 T1 lamps or leds

- Up to 4 way split display

- Up to 4PDT output contacts

- Solder or connector termination

- Engraving/Optical technology

1. Classical
2. Sunlight readable
3. "NVG" compatible

- Front relampable

- Single or matrix configuration

Applicable standard: MIL-S-22885

Special devices upon request

Advanced 4 lamp push button switchlight offering a variety of design improvements:

1. Rotary latching mechanism with smooth and positive operational characteristics over a life in excess of current military specifications.
2. Integral flexible circuit directly connecting lamp terminal to cap assembly. This serves as cap retaining lanyard while maintaining illumination
3. Snap release cap feature allowing change of a complete cap in seconds without removing the switch body from the panel. Easy maintenance.
4. Low cap removal force

**Esterline**  **Power Systems**

Featuring **LEACH**® power and control solutions  
[www.esterline.com](http://www.esterline.com)

**AMERICAS**  
6900 Orangethorpe Ave.  
P.O. Box 5032  
Buena Park, CA 90622

Tel: (01) 714-736-7599  
Fax: (01) 714-670-1145

**EUROPE**  
2 Rue Goethe  
57430 Sarralbe  
France

Tel: (33) 3 87 97 31 01  
Fax: (33) 3 87 97 96 86

**ASIA**  
Units 602-603 6/F Lakeside 1  
No.8 Science Park West Avenue  
Phase Two, Hong Kong Science Park  
Pak Shek Kok, Tai Po, N.T.  
Hong Kong

Tel: (852) 2 191 3830  
Fax: (852) 2 389 5803

Data sheets are for initial product selection and comparison. Contact Esterline Power Systems prior to choosing a component.

**DETAIL DATA****SERIES L402**

Weight standard unit without connector	32 grams max
Weight standard unit with connector	40 grams max
Minimum mechanical life	100,000 cycles
Actuation force	10 to 20 N
Cap removal force	10 N max
Mounting panel thickness	23 mm

**ELECTRICAL CHARACTERISTICS**

Switch rating (resistive), silver contacts	8A / 28 Vdc
Switch rating (resistive), gold plated contacts	5A / 28 Vdc
Dielectric strength	1800 Vrms / 50 Hz
Insulation resistance at 500 Vdc	> 1000 M $\Omega$
Initial contact resistance at nominal current	25 m $\Omega$

**LAMP CIRCUIT DETAIL**

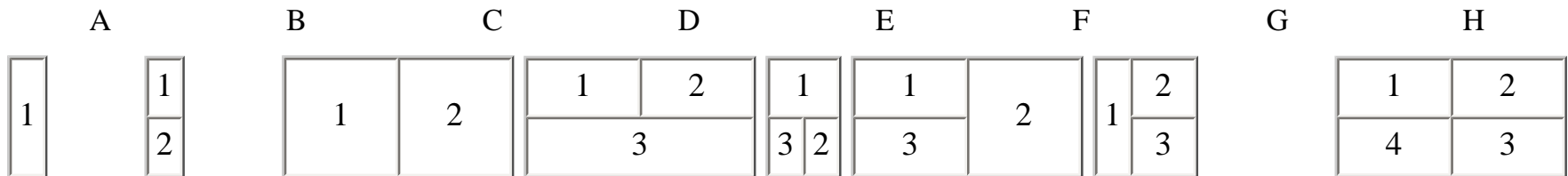
Lamp circuit path resistance	< 1 $\Omega$
Dielectric strength	1000 Vrms / 50 Hz
Insulation resistance at 500 Vdc	> 1000 M $\Omega$

**ENVIRONMENTAL DATA**

Operating temperature	-55 C to +85 C
Vibration	15G 10-2000 Hz
Humidity	95%
Shock	75G (6 ms)
Acceleration	20G

<b>2. SWITCH CONFIGURATION</b>		
A. 1 PDT B. 2 PDT C. 3 PDT D. 4 PDT	E. 1 PDT F. 2 PDT G. 3 PDT H. 4 PDT	J. Indicator
<b>3. MECHANICAL ACTION</b>	<b>4. CAP PROTRUSION</b>	<b>5. CONNECTOR</b>
0. Indicator 1. Momentary 2. Alternate	0. 3 mm (travel 4.5 mm) 1. 7 mm (travel 6 mm) No travel on indicator	0. No 1. Yes
<b>6. LAMP CIRCUIT</b>	<b>7. LAMP TYPE</b>	<b>8. OPTIONS</b>
1. Horizontal split ground 2. Vertical split ground 3. Common ground	1. 28 V, 24 mA, 0.15 MSCd 2. 5 V, 60 mA, 0.05 MSCd 3. 6 V, 40 mA, 0.04 MSCd 4. 12 V, 30 mA, 0.10 MSCd Other lamps and leds available	0. None 1. Flip guard 2. Drip shroud 3. Mounting spacer 4. Barrier

**9. LENS CONFIGURATION**



**10. LEGEND TYPE**

1. Colored characters not visible until illuminated, opaque black background (hidden legend)
2. Opaque black characters on black background (hidden legend). Background shows color when illuminated
3. Opaque black characters visible at all times on white background. Background shows color when illuminated
4. White characters visible at all times on opaque black background. Characters show color when illuminated
5. Opaque black characters and visible colored background. Background shows color when illuminated
6. Opaque white characters and visible colored background. Background shows color when illuminated
7. No characters. Plain colored filter which shows color when illuminated
8. No characters. Plain white filter which shows color when illuminated
9. Specific request

**11. FILTER COLOR**

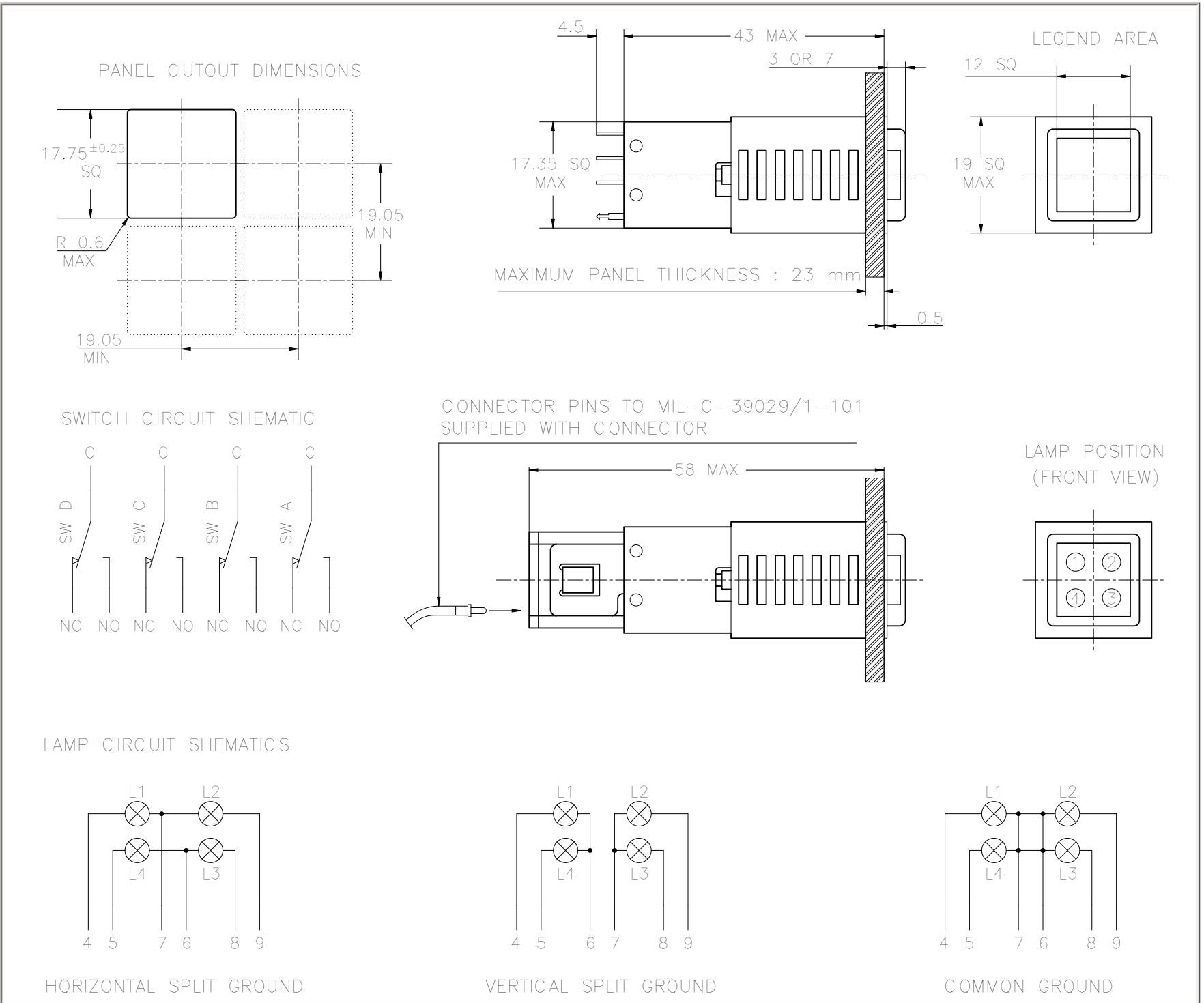
- |                             |           |
|-----------------------------|-----------|
| 0. Amber                    | 3. Red    |
| 1. Blue                     | 4. White  |
| 2. Green                    | 5. Yellow |
| NVG compatibility available |           |

**12. LEGEND**

Add legend after the switchlight code using commas (,) between rows & slash (/) between splits. Standard characters are to DIN 1451 type 4. Specify legend type, color and legend in the numerical order as specified in section 9.

# DIMENSIONS

# SERIES L402



## PART NUMBER SYSTEM

	L402	C	1	0	1	1	1	0	E	3	(342)	TEST/OFF/ON
1-Series	_____											
2-Microswitch type/number	_____											
3-Mechanical action	_____											
4-Cap travel	_____											
5-Connector	_____											
6-Lamp circuit	_____											
7-Lamp type	_____											
8-Optional items	_____											
9-Lens configuration	_____											
10-Legend type	_____											
11-Color	_____											
12-Legend	_____											