

	Options								
	V310	-	D	-	110	-	C	-	C
Basic series designation: AC over voltage sensor, V310 can size	___								
1-Output Configuration: D series relay, 2 PDT, 10 Amps Res, @28 Vdc	_____								
2-Trip point: 110 volts RMS	_____								
3-Temperature And Accuracy: -55° C to +85° C, ±10%	_____								
4-Mounting Style And Terminals: Style C	_____								

1. SERIES NUMBER

Indicates physical dimensions and weight
V310 1.53 x 1.53 x 2.34 wt 10 oz. max

2. OUTPUT CONFIGURATION, CONTACT RATINGS

MIL-PRF-83536 TYPE

J 2 PDT, Leach series J relay, 10 Amp resistive,
@28 Vdc and 115 Vac, 400 Hz

K 4 PDT, Leach series K relay, 10 Amp resistive,
@28 Vdc and 115 Vac, 400 Hz

NOTE: For additional data on contact ratings, contact the factory.

3. VOLTAGE TRIP POINT

Sensing range: 90 to 124 Vac
Specify trip point within indicated sensing range, specify by using three digits, e.g.

Trip Point: 110 Vrms
Specify: 110

4. TEMPERATURE RANGE AND ACCURACY

Code Letter	Temp, Range	Trip Point Accuracy
A	-55° To +85°C	±2%
B	-55° To +85°C	±5%
C	-55° To +85°C	±10%
D	-55° To +125°C	±5%
E	-55° To +125°C	±10%

5. MOUNTING STYLES AND TERMINALS

See next page

NOTES

1. Operating Mode

The output relay energizes when the voltages of any phase is above the trip point and de-energizes when the voltage of all three drops below the trip point.

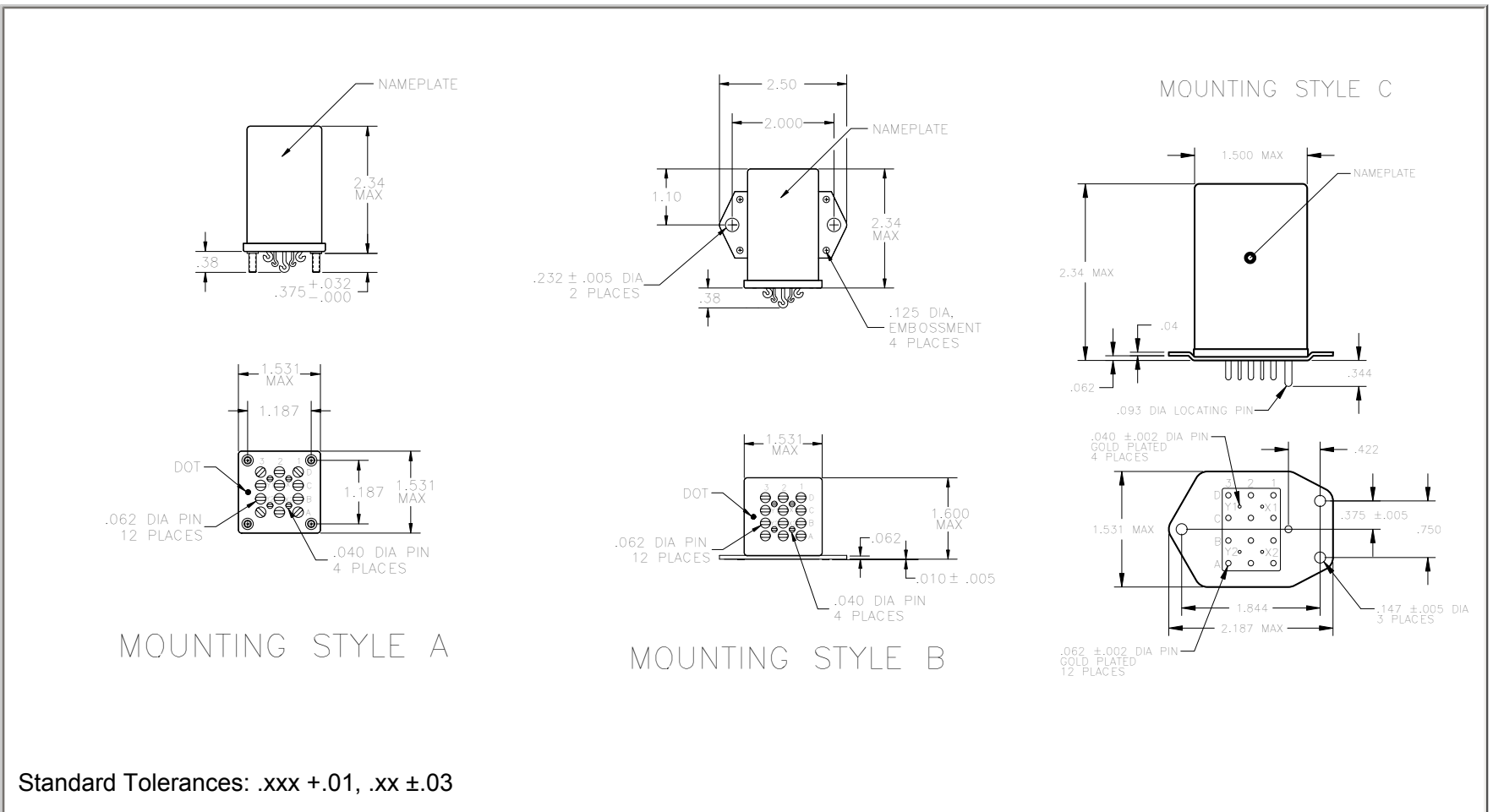
2. Dielectric Strength

Input to case	1,000 Vrms
2 Amp contacts	
contacts to case	1,000 Vrms
Across open contacts	500 Vrms
10 Amp contacts	
contacts to case	1,250 Vrms
Across open contacts	1,250 Vrms

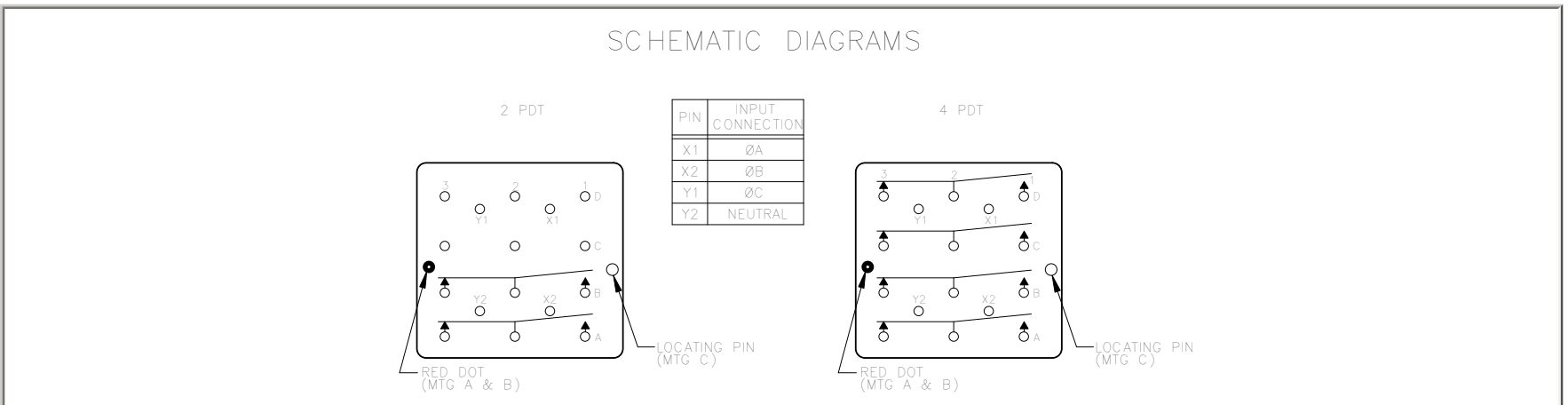
3. Hysteresis

Units have a typical hysteresis of 0.5% to eliminate cycling due to small changes in voltage at the trip point.

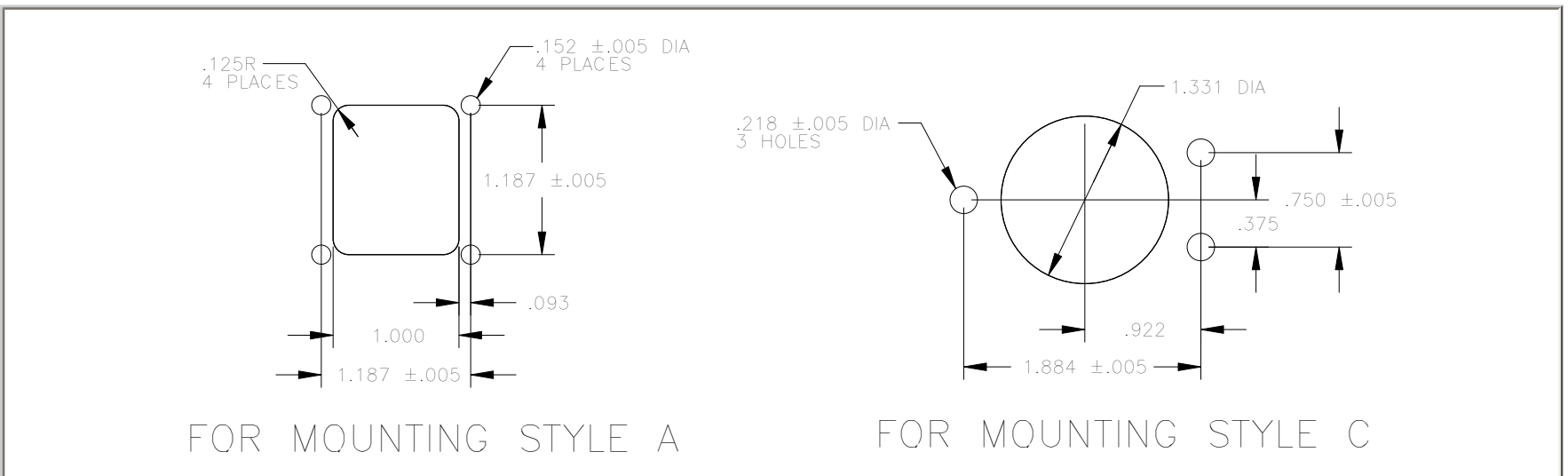
4. Contact factory for voltage sensor requirements not covered in this publication.



SCHEMATIC DIAGRAM



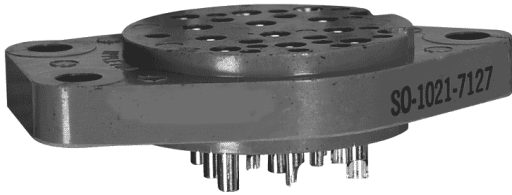
MOUNTING DIMENSIONS



SO-1021-7127/7126

ENGINEERING DATA SHEET

RELAY SOCKET
10 AMP



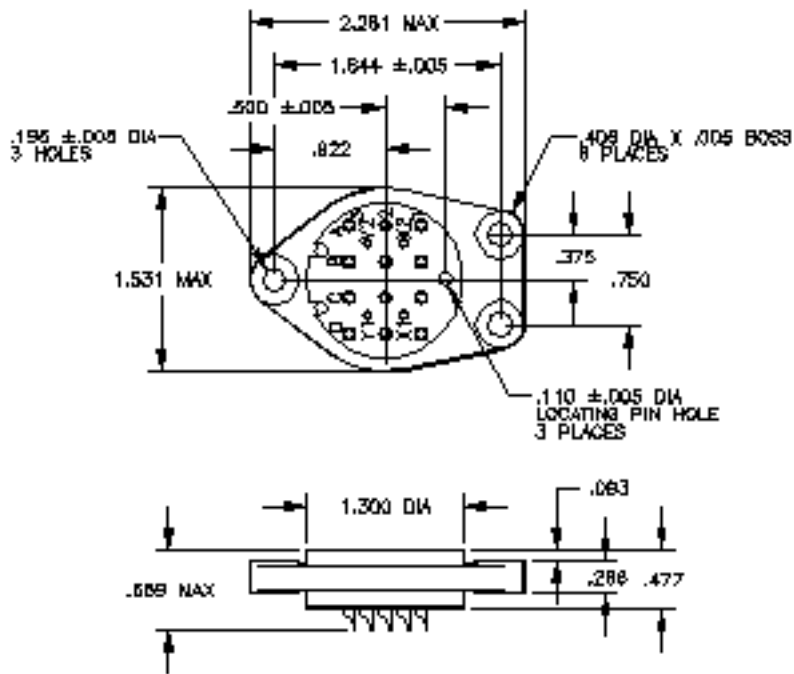
BASIC SOCKET SERIES DESIGNATION FOR:

Series V110, V210, V310, V710, F410, P510

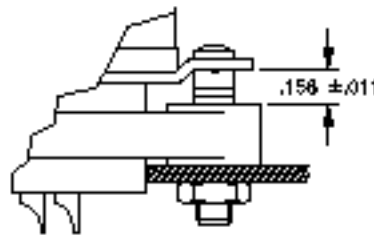
MEETS THE REQUIREMENTS OF:

MIL-DTL-12883

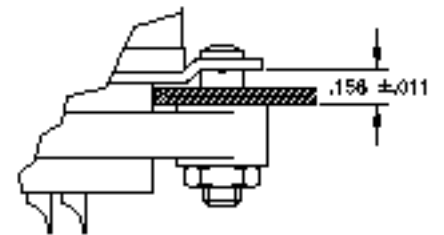
SOCKET DRAWING



HARDWARE MOUNTING



TOP MOUNTED



BOTTOM MOUNTED

GENERAL CHARACTERISTICS

1. Supplied with mounting hardware (SO-1021-7127) or without mounting hardware (SO-1021-7126).	
2. Standard tolerances	.xx ±.01; xxx ±.005.
3. Weight	.080 lb. max.
4. Temperature range	-55° C to +125° C



Featuring **LEACH®** power and control solutions
www.esterline.com

AMERICAS
6900 Orangethorpe Ave.
P.O. Box 5032
Buena Park, CA 90622

Tel: (01) 714-736-7599
Fax: (01) 714-670-1145

EUROPE
2 Rue Goethe
57430 Sarralbe
France

Tel: (33) 3 87 97 31 01
Fax: (33) 3 87 97 96 86

ASIA
Units 602-603 6/F Lakeside 1
No.8 Science Park West Avenue
Phase Two, Hong Kong Science Park
Pak Shek Kok, Tai Po, N.T.
Hong Kong

Tel: (852) 2 191 3830
Fax: (852) 2 389 5803

Data sheets are for initial product selection and comparison. Contact Esterline Power Systems prior to choosing a component.