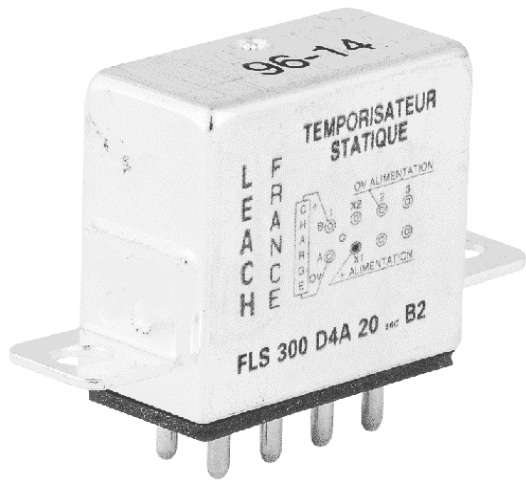


# ENGINEERING DATA SHEET

# FLS300

TIME DELAY RELAY  
1PST (SSO)



APPLICABLE SOCKET:  
S300

Time delay relay (on operate, on release or repeat cycle timer)

Fixed or adjustable timing delay

Contact arrangement

**1 solid state output**

Power supply

**Direct current**

## PRINCIPLE TECHNICAL CHARACTERISTICS

Contacts rated at

**0.25mAmps / 28 Vdc**

Weight

**< 0.088lb**

Dimensions of case

**1.73in x 1.13in x .52in max**

Tin plated hermetically sealed metal can.

## CONTACT ELECTRICAL CHARACTERISTICS

### Output Current

250 mA inductive at + 25° C

## NUMBERING SYSTEM

	FLS300	-	B	4	A	0.1s	A	1
Basic series designation	_____		_____		_____		_____	
1-Mounting Styles (A,B,C,D,J)	_____		_____		_____		_____	
2-Terminal Types (1,2,4)	_____		_____		_____		_____	
3-Types Of Operation (A,B,C,D)	_____		_____		_____		_____	
4-Time range (1,2,3,4) or fixed time in s	_____		_____		_____		_____	
5-Temperature Range (A,B)	_____		_____		_____		_____	
6-Accuracy (1,2,3)	_____		_____		_____		_____	

## LEACH® INTERNATIONAL

Solutions for Power Switching and Control

www.leachintl.com

North America  
6900 Orangethorpe Ave.  
P.O. Box 5032  
Buena Park, CA 90622 USA

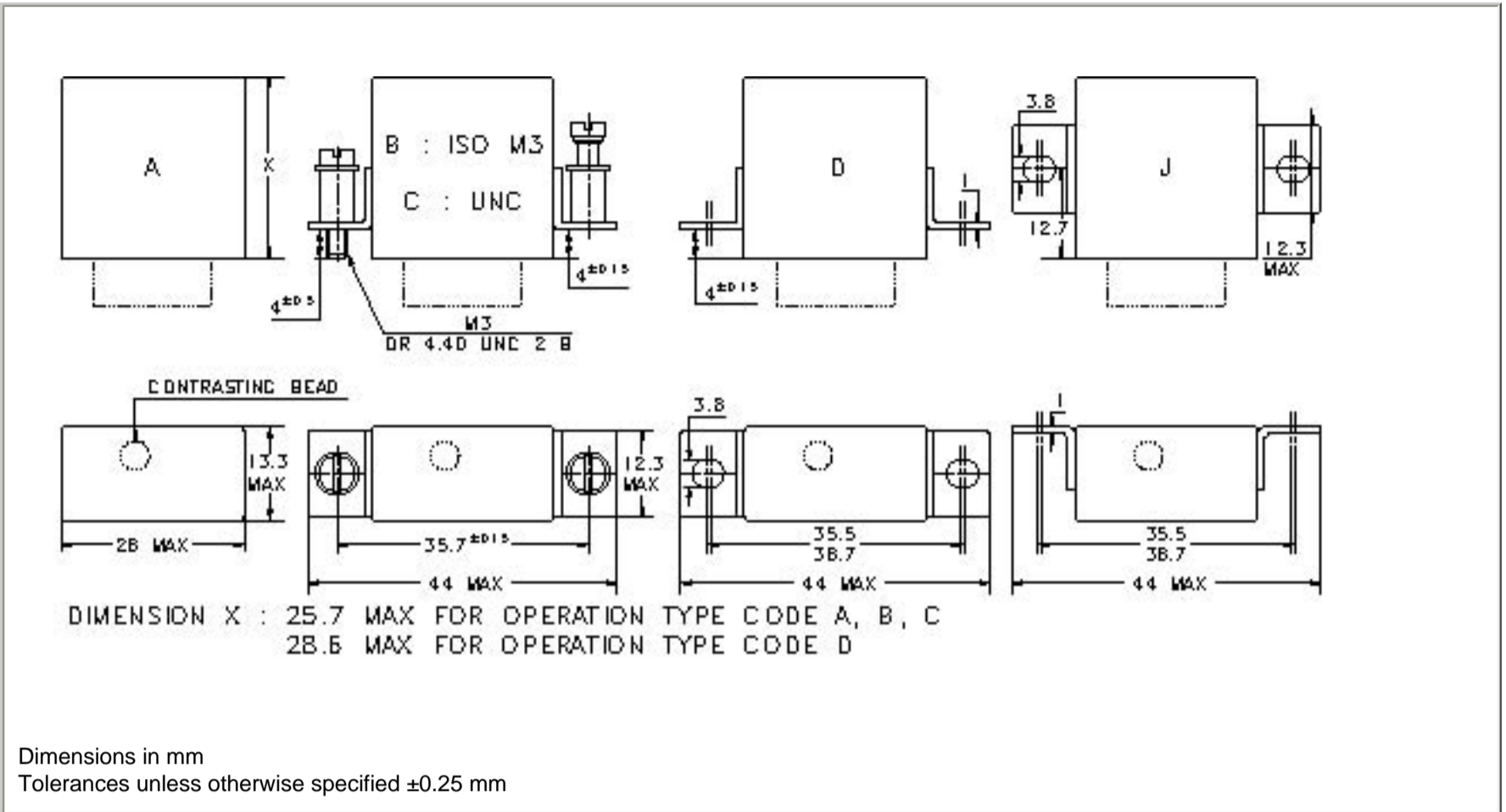
Tel: (01) 714-736-7599  
Fax: (01) 714-670-1145

Europe, SA  
2 Rue Goethe  
57430 Sarralbe  
France

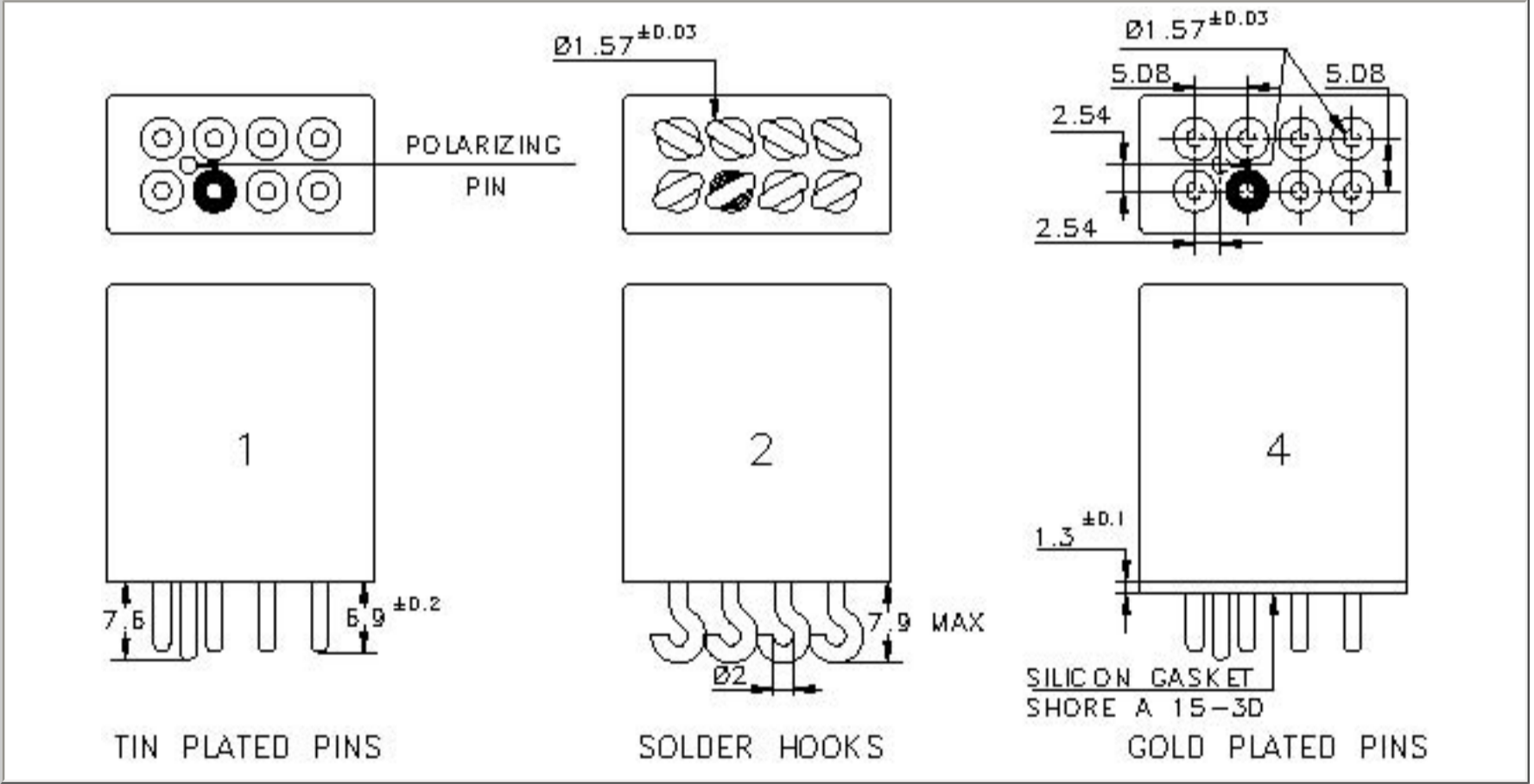
Tel: (33) 3 87 97 98 97  
Fax: (33) 3 87 97 84 04

Asia-Pacific Ltd.  
20/F Shing Hing Commercial Bldg.  
21-27 Wing Kut Street  
Central, Hong Kong

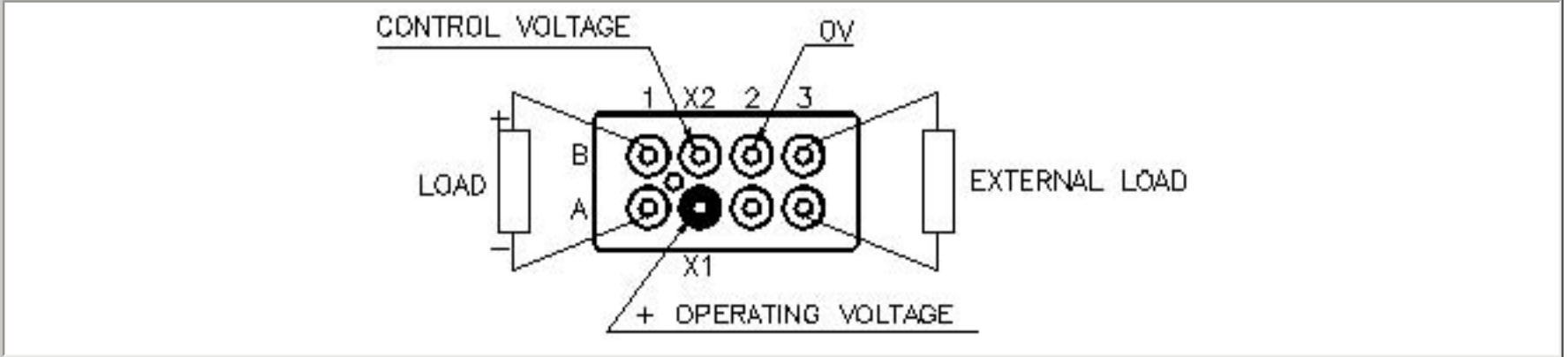
Tel: (852) 2 191 2886  
Fax: (852) 2 389 5803

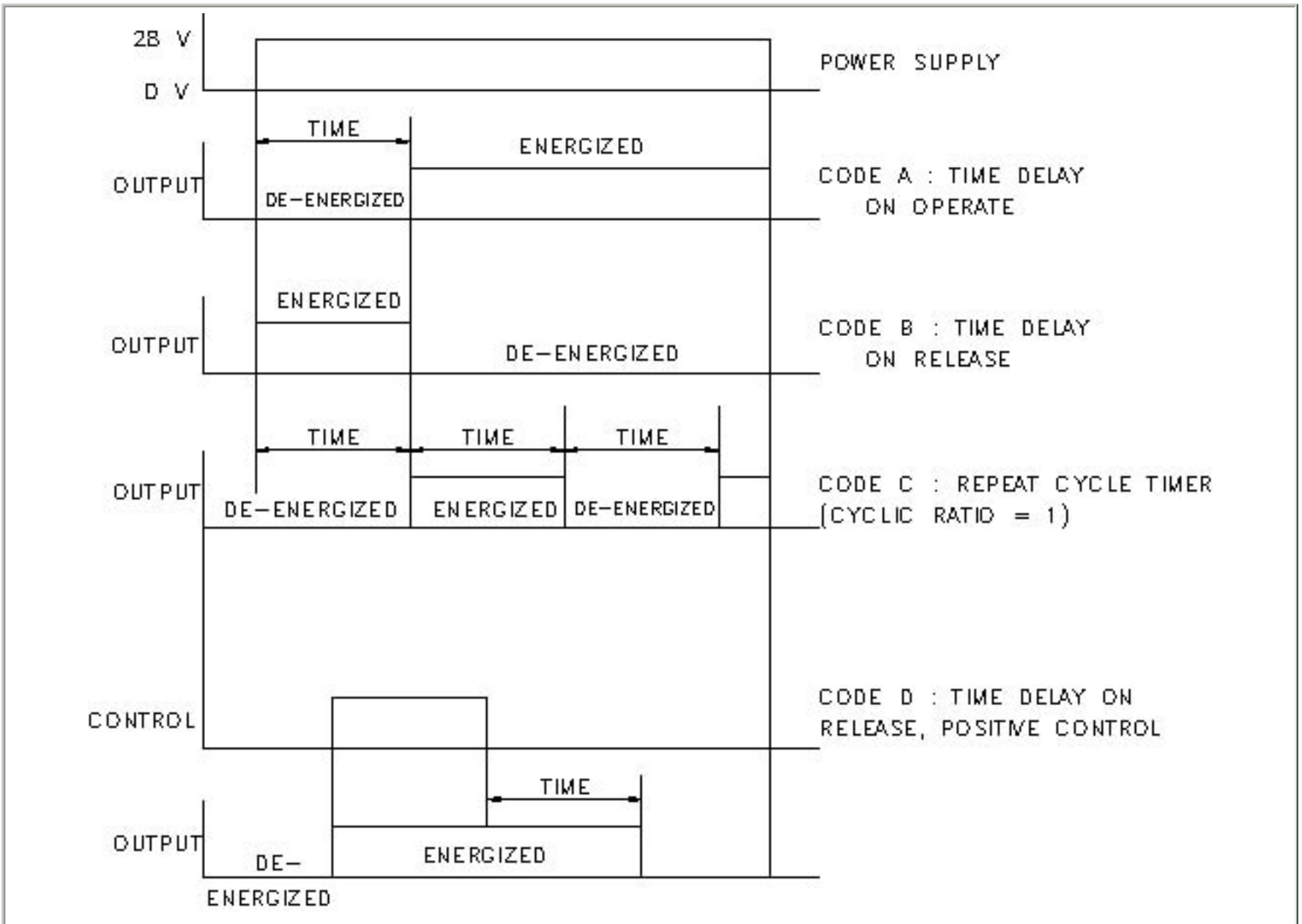


TERMINAL TYPES



SCHEMATIC DIAGRAM/TERMINAL LAYOUT





**TIMING RANGE**

**ADJUSTABLE**

- Range 1: 0.1 to 2.5 seconds       $R_x = 356 * (T - t_o)$
- Range 2: 0.4 to 10 seconds       $R_x = 91.20 * (T - t_o)$
- Range 3: 3.2 to 80 seconds       $R_x = 11.38 * (T - t_o)$
- Range 4: 25 to 625 seconds       $R_x = 1.42 * (T - t_o)$

where  $R_x$  in kohms     $T$ : desired time in seconds,  
 $t_o$ : time measured with  $R_x = 0$ .

Example to determine  $R_x$  value for a  $T$  time of 10 seconds: Choose range 3; measure time with  $R_x = 0$  (for example :  $t_o = 3.1$  s); subtract  $t_o$  from 10 seconds ( $10s - 3.1s = 6.9s$ ); calculate  $R_x = 11.38$  kohms/s (range 3) x 6.9s Theoretical resistance:  $R_x = 78.5$  kohms

**GENERAL CHARACTERISTICS****FLS300**

Temperature range	
- Code A	-55° C to +125° C
- Code B	-40° C to +85° C
Operating Voltage	18 to 32 Vdc (AIR norm 2021 E)
Recycle Time	less than or equal to 50 ms
Dielectric strength between all pins connected together and can	500 V / 50 Hz
Insulation resistance at 100 Vdc (same condition as above)	greater than or equal to 100 M Ω
Sinusoidal vibration	20G / 10 to 2000 Hz
Shock	50G / 11 ms

**ACCURACY**

	fixed period	adjustable period	
			Accuracy resistor Rx to choose
<b>Code 3</b>	±10%	±10%	5% 100 ppm /° C
<b>Code 2</b>	±5%	±5%	2% 100 ppm /° C
<b>Code 1</b>	±3%	±3%	1% 50 ppm /° C

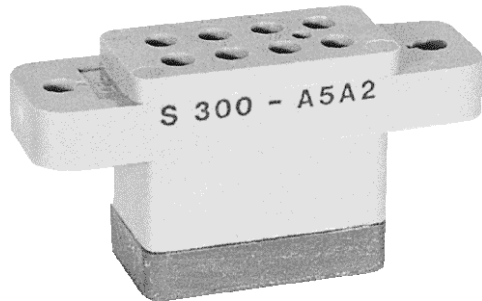
**NOTES**

1. Relays with B,C,D mounting and terminal 4 are compatible with socket families S300.
2. Isolation spacer pads for PCB mounting available on request.
3. For other mounting styles or terminal types, please contact the factory.

# SERIES S300, S302

## ENGINEERING DATA SHEET

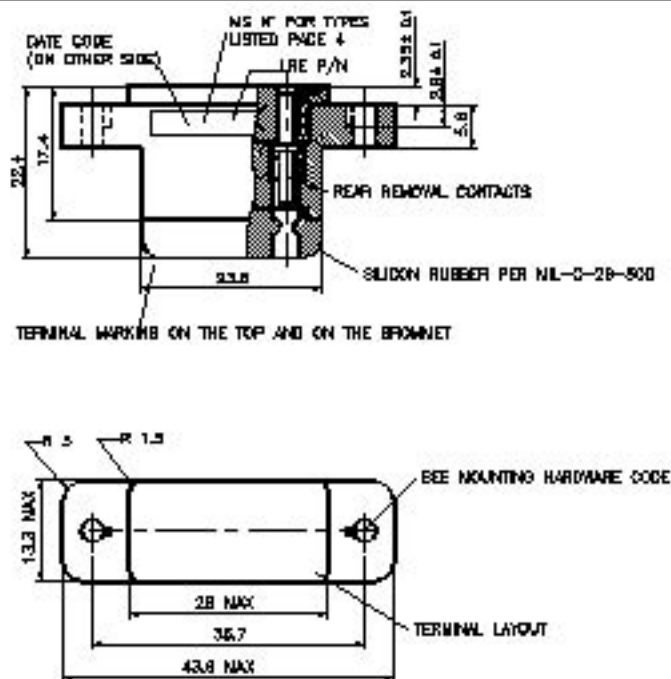
RELAY SOCKET  
10 AMP



BASIC SOCKET SERIES DESIGNATION FOR:

**SERIES FD300, FLS300, FLR300**

### DIMENSIONS



### GENERAL CHARACTERISTICS

Crimp tool contact #22	M 22520/2-01 with turret M 22520/2-06.
Insertion and extraction tool	# 22 - M 15570-22-1.
Weight	35g max.
Crimp tool contact #16	M 22520/1-01 with turret M 22520/2-02 or MS3191-1.
Insertion and extraction tool	NAS 1664-16.
Temperature range	-70° C to +125° C.
<p>This connection is designed to the standards and requirements of MIL-S-12883  Contacts and hardware to be delivered disassembled in a plastic bag.  Tolerances, unless otherwise specified, <math>\pm 0.25</math>mm.</p>	

**LEACH® INTERNATIONAL**

*Solutions for Power Switching and Control*

www.leachintl.com

North America  
6900 Orangethorpe Ave.  
P.O. Box 5032  
Buena Park, CA 90622 USA

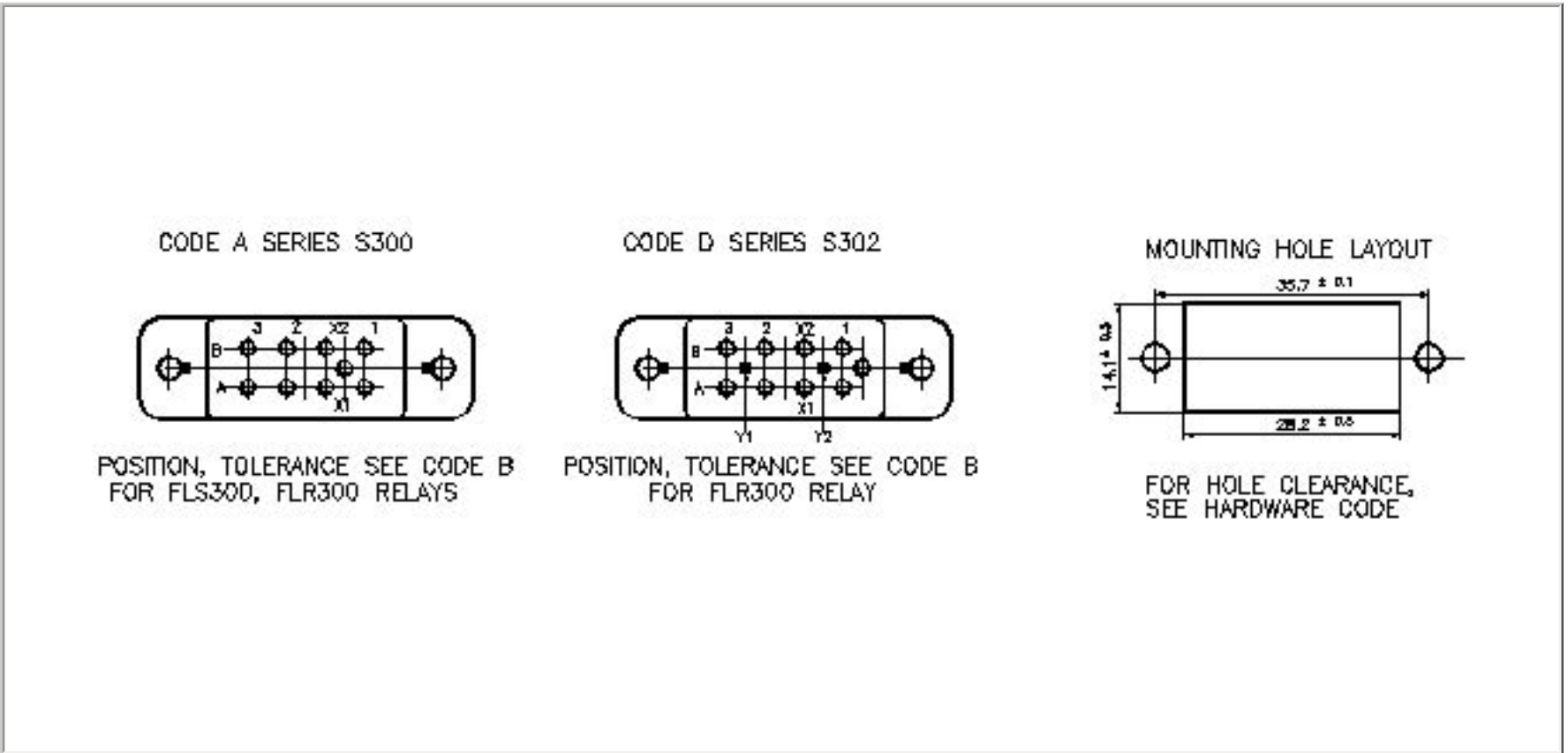
Tel: (01) 714-736-7599  
Fax: (01) 714-670-1145

Europe, SA  
2 Rue Goethe  
57430 Sarralbe  
France

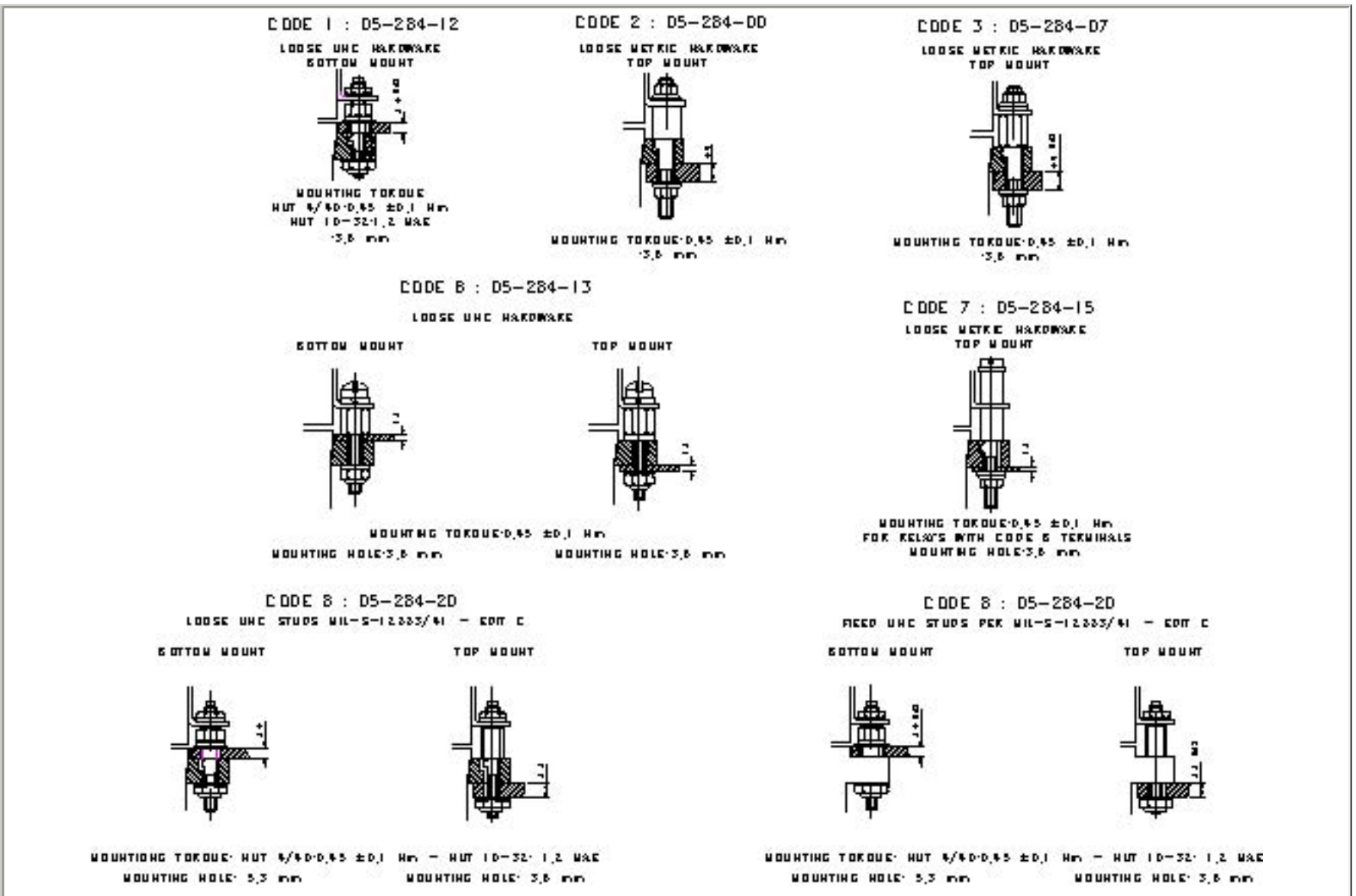
Tel: (33) 3 87 97 98 97  
Fax: (33) 3 87 97 84 04

Asia-Pacific Ltd.  
20/F Shing Hing Commercial Bldg.  
21-27 Wing Kut Street  
Central, Hong Kong

Tel: (852) 2 191 2886  
Fax: (852) 2 389 5803



MOUNTING HARDWARE





**MS/LEACH CROSS PART NO. AND MATING RELAYS**

**SERIES S300, S302**

	<b>MS - Number</b>	<b>LEACH P/N</b>	<b>Contacts to accomodate wire #</b>	<b>Hardware</b>
<b>MIL-S-12883/41</b>	-01	S300-A6A2	16-18-20	Loose terminals Above/below panel mounting
	-04	S300-A6B3	20-22-24	
	<b>MS - Number</b>	<b>LEACH P/N</b>	<b>Contacts to accomodate wire #</b>	<b>Hardware</b>
<b>MIL-S-12883/41B</b>	-11	S300-A1A2	16-18-20	Loose terminals below panel mounting
	-14	S300-A1B3	20-22-24	
	<b>MS - Number</b>	<b>LEACH P/N</b>	<b>Contacts to accomodate wire #</b>	<b>Hardware</b>
<b>MIL-S-12883/41C</b>	-11S	S300-A8A8	16-18-20	Loose terminals Above/below panel mounting
	-14S	S300-A8B9	20-22-24	
	-15S	S302-D8A8	16-18-20	
<b>MIL-S-12883/41C</b>	-16S	S300-A9A8	16-18-20	Fixed terminals Above/below panel mounting
	-19S	S300-A9B9	20-22-24	
	-20S	S302-D9A8	16-18-20	