

# ENGINEERING DATA SHEET

# SERIES WL-X9YN

PLUG-IN CONTACTOR, MAGNETIC LATCH  
3 PST/NO, 385 AMP



Line Replaceable Contactor (LRC)  
Balanced-Force design, latching  
Designed to the performance standards of **MIL-PRF-6106**  
Contact arrangement **3 PST/NO**

### PRINCIPLE TECHNICAL CHARACTERISTICS

Contacts rated at **28 Vdc and 115/200Vac, 400Hz, 3Ø**  
Weight **3.50lbs max**  
Dimensions **4.43 in. x 4.43 in. x 3.70 in.**  
Special units available upon request, including models with auxiliary contacts.

### CONTACT ELECTRICAL CHARACTERISTICS

Contact rating per pole and load type	Load current in Amps
	115/200 Vac, 400 Hz, 3Ø
Resistive	385
Inductive	385
Motor	245



Featuring **LEACH**® power and control solutions  
[www.esterline.com](http://www.esterline.com)

**AMERICAS**  
6900 Orangethorpe Ave.  
P.O. Box 5032  
Buena Park, CA 90622

Tel: (01) 714-736-7599  
Fax: (01) 714-670-1145

**EUROPE**  
2 Rue Goethe  
57430 Sarralbe  
France

Tel: (33) 3 87 97 31 01  
Fax: (33) 3 87 97 96 86

**ASIA**  
Units 602-603 6/F Lakeside 1  
No.8 Science Park West Avenue  
Phase Two, Hong Kong Science Park  
Pak Shek Kok, Tai Po, N.T.  
Hong Kong  
Tel: (852) 2 191 3830  
Fax: (852) 2 389 5803

Data sheets are for initial product selection and comparison. Contact Esterline Power Systems prior to choosing a component.

**COIL CHARACTERISTICS (Vdc)****SERIES WL-X9YN**

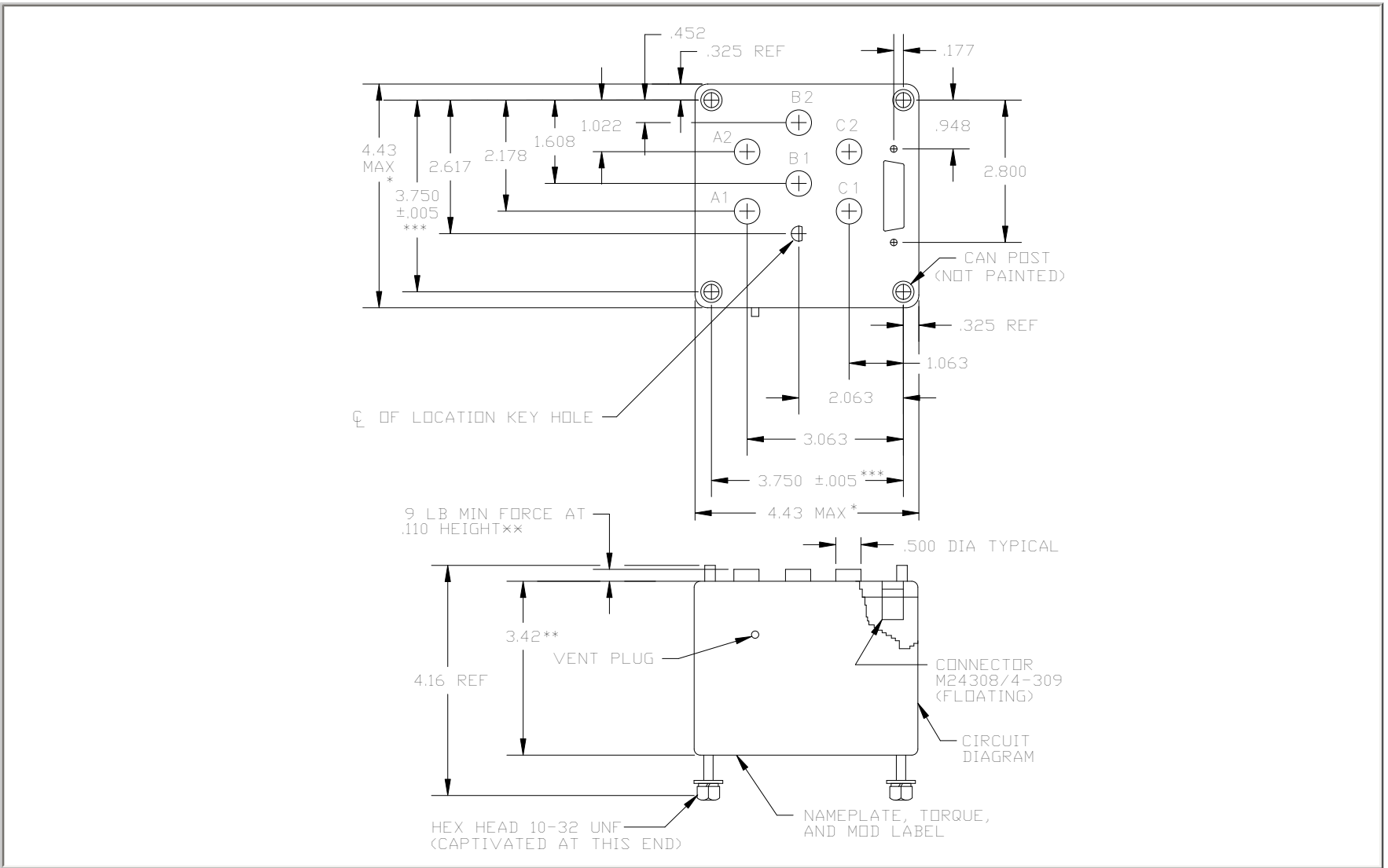
Nominal operating voltage	28 Vdc
Duty Cycle	200ms ON; Indeterminate OFF
Latch/reset voltage	22 Vdc min/15 Vdc
-Latch time reset	15 ms at 22 Vdc
-Reset time/reset	20 ms at 15 Vdc
-Maximum set and reset voltage, 7 A (shall not trip 7.5 A circuit breaker)	

**GENERAL CHARACTERISTICS**

Contact Data	Main Contacts	Aux Contacts
-Configuration	3PST NO, latch	3X SPST NC, 6X SPST NO
-Supply voltage	115/200 Vac	28 Vdc
-Continuous current	385 Amp at .75PF	100mA; compatible with a 7.5A circuit breaker
-Rupture current	1600 Amp	-
-Overload	700 Amp	-
-Maximum contact bounce	3 ms	3 ms
-Simultaneous operation	3 ms	3 ms
Electrical life		
-At ambient pressure	25,000 operations	
-At 45,000 ft	25,000 operations	
Mechanical life	100,000 operations	
Insulation resistance	≥ 40 M Ω at 500 Vrms	
Dielectric Strength		
-All circuits to ground	1500 Vrms	
-Circuit to circuit to ground and aux contacts	1250 Vrms	
Altitude	45,000 ft	
Continuous operating temperature range	-15°C to +65°C	

**NUMBERING SYSTEM**

	WL-X9YN - XXX
Basic series designation_____	
Customer configuration_____	



SCHEMATIC

